




# FIGURE X NATURAL FEATURES

## VILLAGE OF RICHFIELD SPRINGS AND TOWN OF RICHFIELD JOINT COMPREHENSIVE PLAN

OTSEGO COUNTY, NEW YORK

### LEGEND

-  Municipal Boundary
-  NYS DEC Classified Stream
-  Waterbody



### FEMA Preliminary Flood Zone:

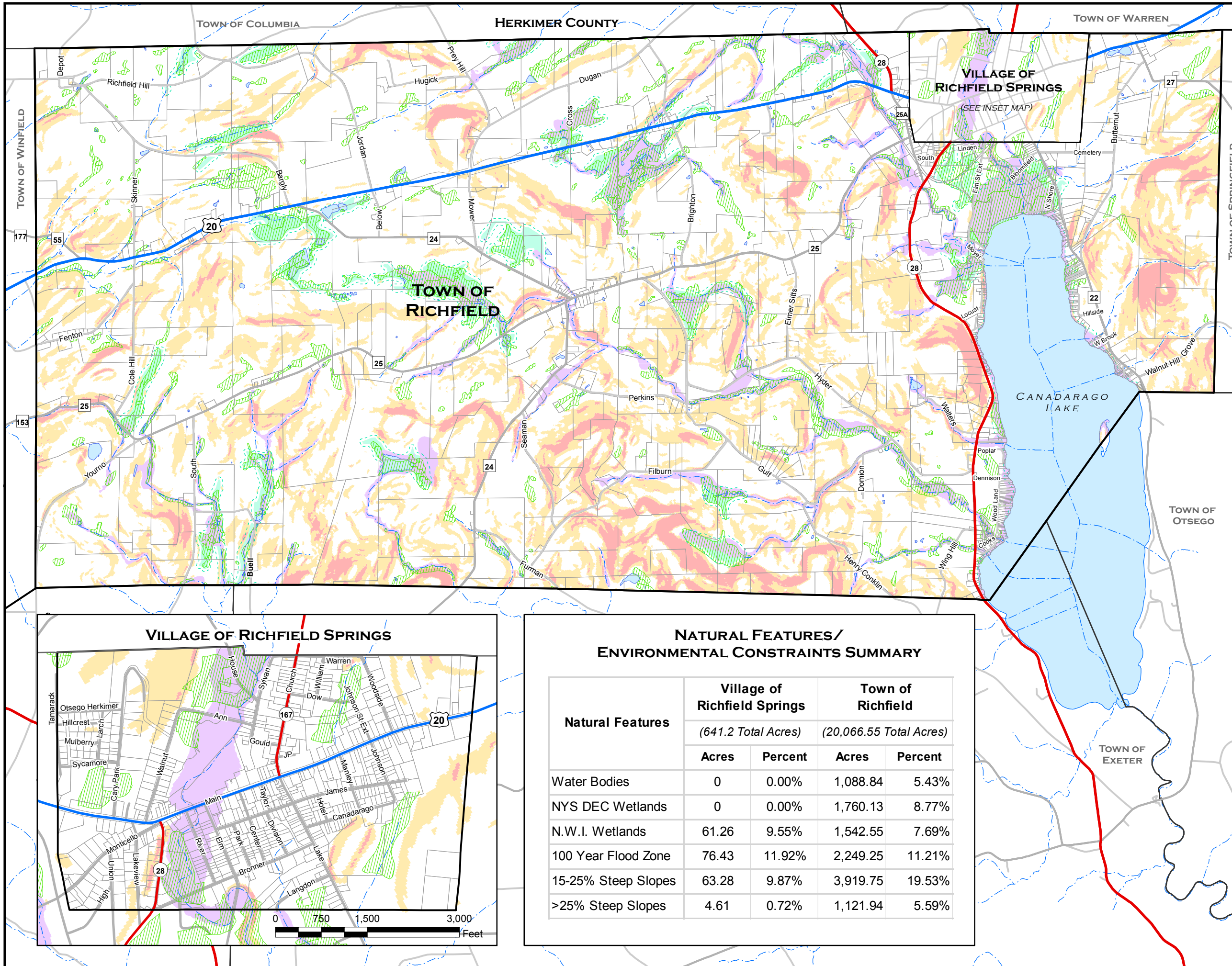
-  100 Year Flood Zone

### Wetlands:

-  NYS DEC Freshwater Wetland
-  NYS DEC Wetland buffer
-  N.W.I. Freshwater Wetland

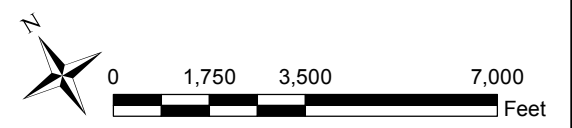
### Steep Slopes:

-  15-25% Steep Slopes
-  >25% Steep Slopes



### NATURAL FEATURES/ ENVIRONMENTAL CONSTRAINTS SUMMARY

Natural Features	Village of Richfield Springs (641.2 Total Acres)		Town of Richfield (20,066.55 Total Acres)	
	Acres	Percent	Acres	Percent
Water Bodies	0	0.00%	1,088.84	5.43%
NYS DEC Wetlands	0	0.00%	1,760.13	8.77%
N.W.I. Wetlands	61.26	9.55%	1,542.55	7.69%
100 Year Flood Zone	76.43	11.92%	2,249.25	11.21%
15-25% Steep Slopes	63.28	9.87%	3,919.75	19.53%
>25% Steep Slopes	4.61	0.72%	1,121.94	5.59%



Date: September 2, 2015  
 Sources: NYSDEC Wetlands, Classified Streams  
 NWI Wetlands  
 Otsego County Lakes & Open Water GIS file  
 FEMA Draft 100 Year Floodzone, 2009  
 Steep Slopes created from NYS 10m DEMs